

## TITLE IN BOLD USING SMALL CAPS 14 POINT FONT

Presenting Author,<sup>1</sup> Co-Author,<sup>1\*</sup> and Co-Author<sup>2</sup>

<sup>1</sup>Name of first institute or university, full mailing address (no email address, fax, or phone)

<sup>2</sup>Name of second institute or university, full mailing address (no email address, fax, or phone)

\*Corresponding author: Name, email address

### Abstract (12pt, bold)

The font to be used throughout the text is ComputerModern or Times New Roman. The font size for normal text is 10 pt (for all text in the abstract, the sections, and the references). "12<sup>th</sup> International Couette-Taylor Workshop..." header should be 10pt, italic. The paper's title should be 14pt, bold, small caps. Headings should be 12pt, bold. Use single spacing for all text. Allow two line spaces before a heading. You may prepare your abstract using any word processor. Your paper will be reproduced "as is" with no editing or corrections. If your paper is not of adequate quality to be reproduced, it will not be included in the Workshop Proceedings (hard copy or web version). Please submit your abstract in the form of a pdf file, if at all possible. This will make printing and web publication easiest. See the Conclusions section if you cannot create a pdf file.

### Introduction (12pt, bold)

You may prepare your abstract with Microsoft Word or LaTeX. Your paper will be reproduced "as is" with no editing or corrections. If your paper is not of adequate quality to be reproduced, it will not be included in the Workshop Proceedings (hard copy or web version).

Please submit your abstract in the form of a pdf file as an attachment to an email, if at all possible. This will make printing and web publication easiest. If you cannot create a pdf file, see the Conclusions section of this document. Submit your electronic abstract as an attachment to an email message sent directly to Richard Lueptow at [rlueptow@northwestern.edu](mailto:rlueptow@northwestern.edu).

The extended abstract may be as short as one page or as long as four pages. Abstracts will be published in the hard copy Couette-Taylor Workshop proceedings distributed to all participants. In addition, your abstract will be published on the Workshop web site, provided that it can be converted to a pdf file. Please note that submitting an abstract does not guarantee that it will be published--abstracts will only be published for authors attending the Workshop.

### Methods (12pt, bold)

Please include the line shown above the title indicating "12<sup>th</sup> International Couette-Taylor Workshop..." in 12 pt, italic. This is to be included at the top of the first page of every abstract so that any abstracts downloaded from the Workshop web site will include proper reference to the Workshop.

Indent each paragraph by 0.25 inches or 0.5 cm. Do not use a line space after headings or between paragraphs. If possible, right and left justify the text as shown in this example.

### Results (12pt, bold)

To make the submission easiest for both US and non-US authors, both A4 paper size and US Letter paper size are acceptable. However, the final printed proceedings will be on US Letter size paper (8.5" x 11" or 21.6 cm x 27.9 cm). Thus, it is very important to follow the margin guidelines in Table 1. If you use A4 page size format, be sure to make the bottom margin 4.0 cm. A shorter margin may result in text being cut off from the bottom of your abstract when it is printed for the proceedings. Do not put any material (text, tables, or figures) outside of the specified margins. Do not exceed 4 pages for the entire document.

Table 1: Margins and spacing for US Letter and A4 page size formats.

	US Letter (in.)	A4 (cm)
Paper width	8.5	21.0
Paper height	11.0	29.7
Left margin	1.2	3.0
Right margin	0.8	1.0
Top margin	1.0	2.5
Bottom margin	1.0	4.0
Column width	3.0	8.0
Column spacing	0.5	1.0

Tables and figures may be included in the abstract. Please use the format shown in Table 1 and

Fig. 1. Color figures may be used, but they will be reproduced as gray scale for the hard copy conference proceedings. Figures in the web-based Workshop proceedings will be in color if they are submitted as such in the pdf file.

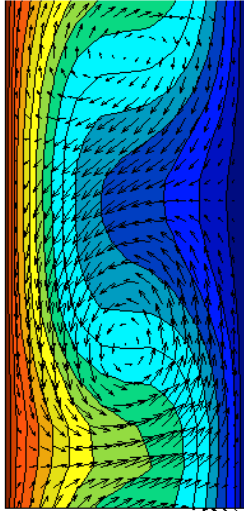


Figure 1: This is an example of how to place a figure in the text. Color figures will be reproduced using a gray scale printer for the hard copy proceedings. However, pdf files on the web will retain color for the figures.

Do not include any page numbers on your abstract. Page numbers will be added when the abstracts are printed for the proceedings.

References should be identified in the text using a number in a bracket [1]. If multiple references are used, they can be identified as multiple numbers in brackets [1,2]. Notice that a "hanging indent" style is used for references. The indent should be about 0.25 in. or 0.6 cm. In the References section samples are provided for a journal paper [1] and a section of a book [2].

### **Conclusions (12pt, bold)**

The easiest way to submit an abstract to the 2001 Couette-Taylor Workshop is via a pdf file. That way we will reproduce the abstract exactly as you prepared it. However, please be consistent with the style indicated in this document.

If you cannot create a pdf file of your abstract, send us an electronic form of the file and we will create a pdf file from it. Other than the pdf format, the best file formats to submit are Microsoft Word or Postscript (ps). Although they are more difficult for use, we can also create a pdf file from a LaTeX file or from a high resolution paper copy. However, we cannot guarantee that we will be able to create a pdf

file for you, so it is best for you to do it yourself. Please note that only pdf file versions of abstracts will appear on the web-based proceedings for the Workshop.

Please bring full-length versions of any related papers or manuscripts to the Workshop. There will a Papers Exchange table set up during the entire Workshop where you can place copies of any papers related to the Workshop topics for distribution to other Workshop participants.

### **Acknowledgements (12pt, bold)**

Include any acknowledgements here.

### **References (12pt, bold)**

- [1] Lastname, R.M., Author2, F.L., and Author3, S. L., 1999, "Title of referenced paper in lower case," *Journal Title*, 45:25-35.
- [2] Lastname, R.M., Author2, F.L., and Author3, S. L., 1999, "Title of referenced paper in lower case," in *Book Title*, edited by R.M. Lastname and D.P. Lastname2, Publisher Co., pages 25-35.